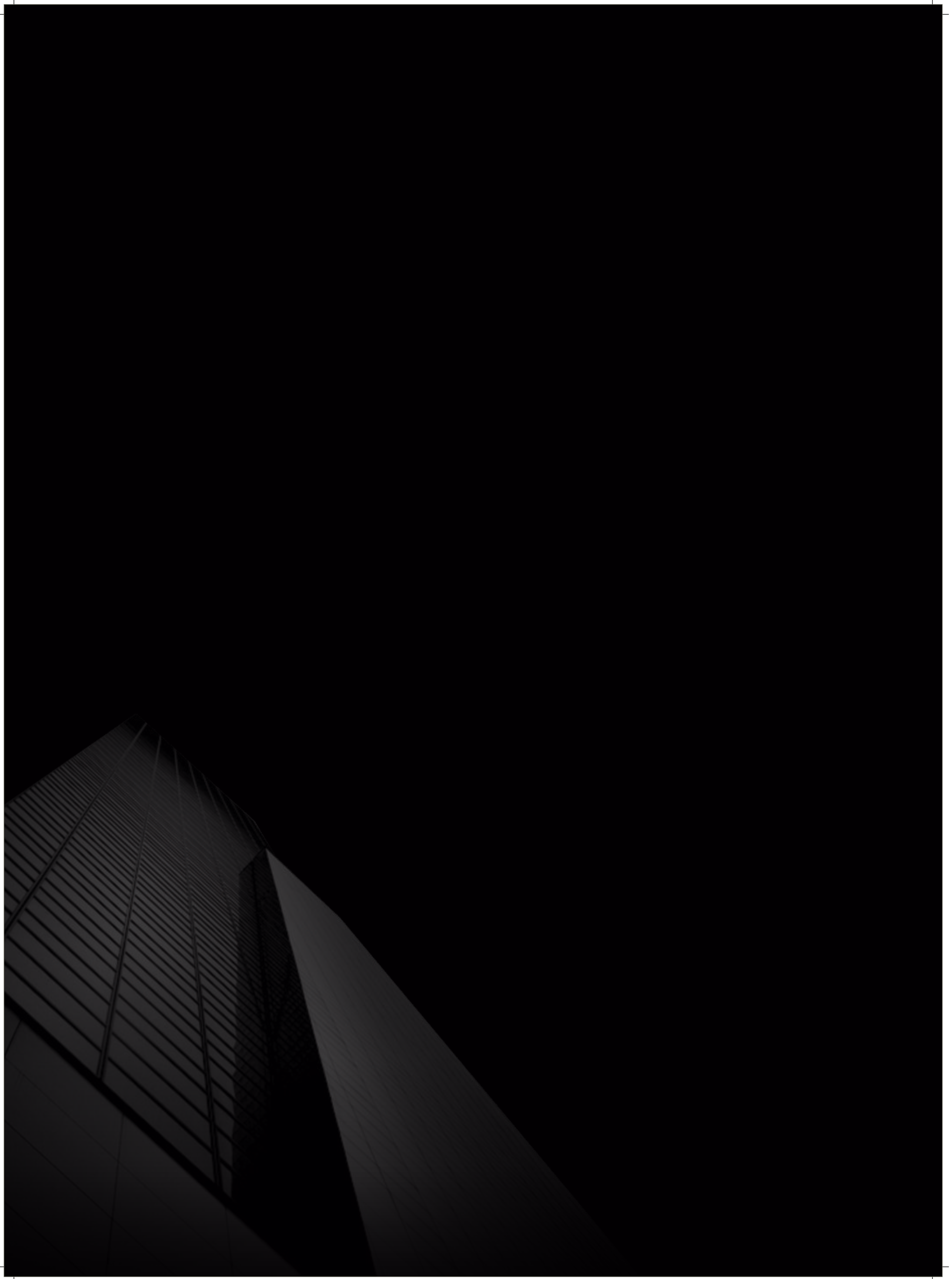




akashparv

RISE ABOVE THE *Rest*



DESTINED FOR THE
Discerning few ...

Life is a journey everyone embarks upon;
many fail, a few succeed.

'AKASHPARV', as the name suggests is
a celebration of success, your success!

It's a prize for your uniqueness, your achievements,
and a reward for your tireless effort
over the years that have now earned you a legacy,
a legacy that others only yearn to achieve.

EXQUISITELY SCULPTED SPACES FOR

The Connoisseur



akashparv
RISE ABOVE THE REST

Playing by the rules is one thing.
Making the rules is quite another.
You belong to the second sort; a breed of self-made
go-getters who don't think the sky is the limit...
Ordinary is anathema to you.
You aspire only for the best.
And your home is certainly not an exception.

'Akashparv' is such an exclusive address that befits your
success and status. It is a larger-than-life abode where
you own a piece of the sky.

Welcome to the epic life deserved only by a chosen few.

SOARING LUXURY,
TOWERING
Elegance

Akashparv as they say, is the gamechanger. Singular in concept as it is in location, this uber luxury property located in Kothrud Annexe, Pune, brings you hi-end terrace apartments that splendidly rise above the urban clutter. Contemporarily styled to live up to your high expectations, this three tower masterpiece sits on a sprawling 3-acre wide greenscape. This graceful landmark soaring up to 19 levels is the tallest structure in the entire locality. Being at the top, you are privileged to proudly admire Pune's skyline.





Artist's Impression





A NEW BENCHMARK IN
Opulence

Akashparv brings you a choice of
3 & 4 BHK Ultra Luxury Apartments -
3 BHK ranging from 1899 sq.ft. onwards
& 4 BHK ranging from 1928 to 2653 sq.ft.

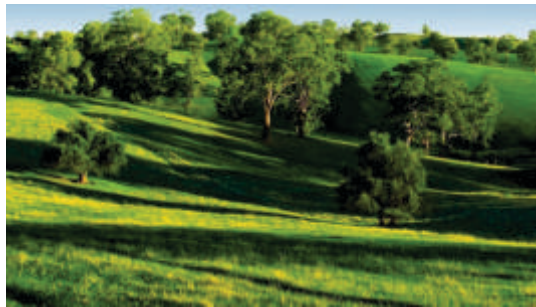
Spacious and uncluttered,
your home embraces you
With a tangible sense of freedom.

Each of the three towers - soaring 22 floors into the sky -
is by any reckoning one of the highest
residential developments in West Pune.
with just two/three residences per floor,
your home at Akashparv
is a sublime showcase of peace,
privacy and exclusivity.

INDULGE IN AN *Exuberant Lifestyle*

Evergreen Surroundings for a Lifetime

At Akashparv, you will never be enclosed by a concrete cluster, the project is endowed by 7000 acres of evergreen NDA premises in the neighborhood.



A Grand Welcome

The impressive, elegant entrance gate with a boisterous waterfall at the entrance is the perfect red carpet welcome for you.



Designer Air-Conditioned Entrance Lobby

Get a grand welcome by the richness of the beautifully designed air-conditioned lobby with access control.



Jain Temple

An ideal place to pray and meditate in peace, the beautiful Jain temple is more than an eye-catcher; it lends a sacred atmosphere to the entire place.



Safety & Security Systems

- Gas leak detector
- Fire alarm & Detection System
- CCTV Surveillance Monitoring for common areas
- Telephone / Intercom, Guard Phone & Lobby Phone.
- Building Management Systems for monitoring common services.



Energy Efficiency

- Energy saving T5 fixtures in the parking area with timer control.
- Eco- friendly LED lighting for common areas & external lighting.





Access Control

- Automatic boom barriers at main entrance
- Multipoint security for residences



Drop-off Lobby

Experience a sense of pride as you step down your luxury car at the opulent drop-off lobby



Parking Plan

- Park your cherished cars safely and systematically in the 3-level covered parking space
- Separate parking for visitors
- Driver lounge with rest rooms



Ride Smoothly

With 2 high speed elevators for each building with 24 hours back-up, enjoy the perfect mix of style, sophistication & speed.



Power on

With dedicated generator backup for each apartment you don't ever have to worry about power cuts.



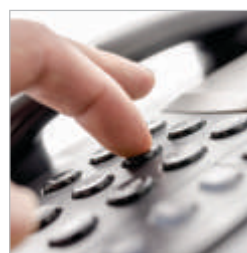
Landscaped Garden

The beautiful landscaped garden interspersed with water bodies and spread across an area of 1 acre is a stunning architectural highlight of Akashparv.



Shopping made Easy

Convenience shopping within the project premises ensures your day-to-day needs are always within your easy reach



On-call services

Laundry, Florist, Doctor, Maintenance Agencies are just a call away !

A scenic view of a city at sunset. In the foreground, a large, shallow pool of water reflects the golden light of the setting sun. A central fountain with a spherical top is illuminated and surrounded by some greenery. The background shows a city with lights, a dense forest, and mountains under a sky with soft, orange and yellow clouds. The overall mood is serene and beautiful.

INFINITELY
Incredible...!

For those who live life on their own terms, it's the exceptional that strikes a chord... Akashparv is replete with bold lifestyle amenities that make living out-of-the-box a real experience. Step on to the expansive terrace to be greeted by two pools – an infinity pool and a kids' pool. Placed at the zenith of the towers, these two pools are part of a trendy, peaceful recreational area on the rooftop. As you watch the glistening skyline with a commanding eye, it's time to indulge in infinite bliss!







Artist's Impression

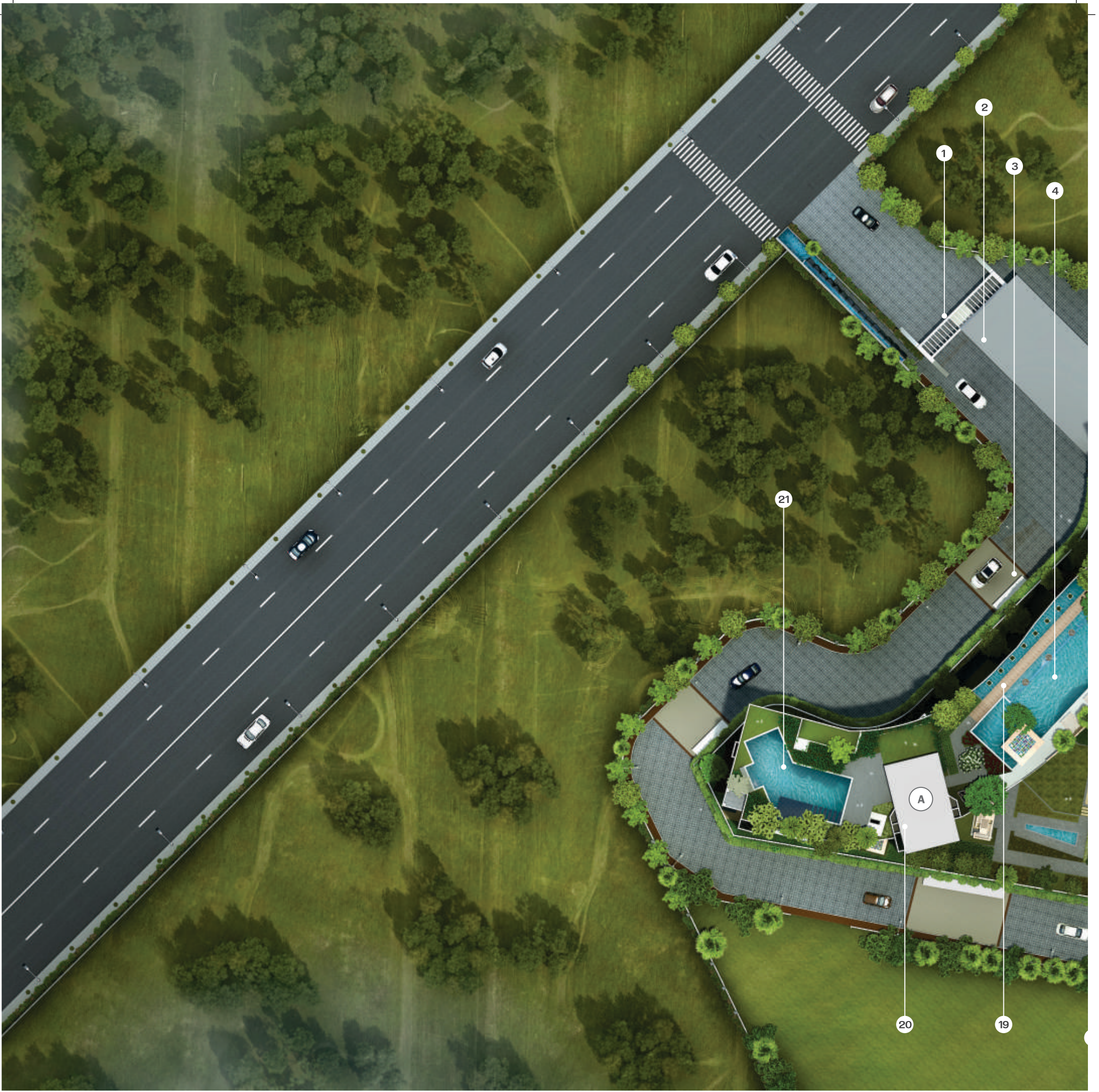
Tranquility THAT INSPIRES

Tucked away in solitude and blessed with abundant greenery, AKASHPARV offers you a charming outdoor ambience. The cool breeze, the rustling of leaves and the melodious chirping of birds all work up a harmonic medley of sights and sounds. Just step out your cozy home get closer to nature.





Artist's Impression



STEP ONTO THE
Skywalk!



- | | | |
|-----------------------------------|----------------------------------|--|
| ① Grand entrance gate | ⑧ Children's play area | ⑮ Yoga gazebo |
| ② Convenience shopping area | ⑨ Mother's den | ⑯ Reflection pool |
| ③ Drop-off lobby | ⑩ Jain Temple | ⑰ Landscaped garden |
| ④ Infinity edge swimming pool | ⑪ Party greens for small parties | ⑱ Pool deck area |
| ⑤ Fully equipped modern Gymnasium | ⑫ Pathway/Jogging track | ⑳ Floating walkway |
| ⑥ Doll house | ⑬ Small party hall | ㉑ Therapy rooms & spa |
| ⑦ Walk-in fountain | ⑭ Senior citizen's den | ㉒ Children swimming pool with cascades |



akashparv

RISE ABOVE THE REST

LIVE THE
Elevated Life

Experience a magical medley of inspiration and architecture; enjoy a synergy of masterful design and modern luxury. It's a masterpiece crafted for those charismatic few who pull only masterstrokes... discover the lifestyle of your dreams.

Enter your overwhelmingly lavish private retreat. At 'Akashparv', you don't live; you rule.





THE LAST WORD IN
Luxury

Indulgence takes on a new dimension at Akashparv. Cherish the graceful interplay of space and light, bask in the exuberance and immerse yourself in a peppy ambiance.

(Actual sample flat image)





SOLITARY
Bliss

With a serene location, enticing interiors and breathtaking views, you don't have to look hard to find some peace – it's there in almost every square feet.

Discover magic in every moment!

(Actual sample flat image)





THE ART OF
Luxury
Cooking

Cook up a culinary extravaganza in the vivacious kitchen endowed with top-of-the-line appliances and embellished with a Modular Kitchen, adequate storage with built in hob, chimney & piped gas connection. The ergonomically designed and ornately furnished kitchen allows for easy, unrestricted movement.

(Actual sample flat image)



Bespoke BATHROOMS

Distinctively stylish yet superbly functional, the fully suited designer bathroom fitted out with chic accessories symbolizes the ultimate in lavishness, comfort and sophistication.

(Actual sample flat image)

FITMENTS WITH A TOUCH OF *Class & Luxury*



Superior Flooring

- Imported marble flooring for living kitchen and dining area
- Wooden flooring for master bedroom
- Imported 1mt X 1mt flooring for other bedrooms



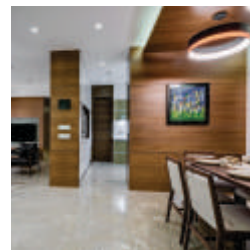
Home Automation

- Home Automation for lighting, fan & AC control
- Device Connectivity - All automation devices can be remotely controlled & monitored through iPad / Android devices



Air Conditioning Systems

Daikin or equivalent air conditioning systems of appropriate capacity for all bedrooms in the apartment



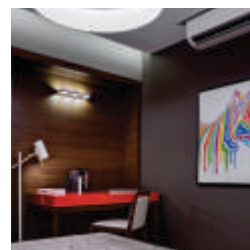
False Ceiling

False ceiling with concealed LED lights for the entire apartment for superior & elegant look



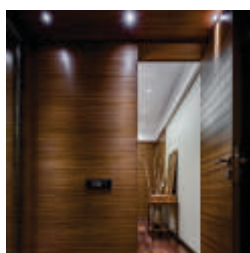
Bathrooms

- Glass partition for shower area in all bathrooms
- Grohe / Kohler equivalent CP fixtures
- Toto / Kohler wash basins & EWCs



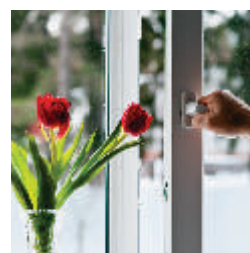
Paint & Finishes

Superior Luster finish paints for internal walls



Doors

- Veneer finished doors with high quality hardware fittings
- Main Doors fitted with imported lock



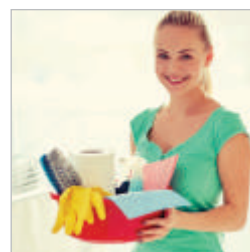
Windows

Smooth finish heavy duty UPVC windows for better sound insulation & dust free homes



Electrical

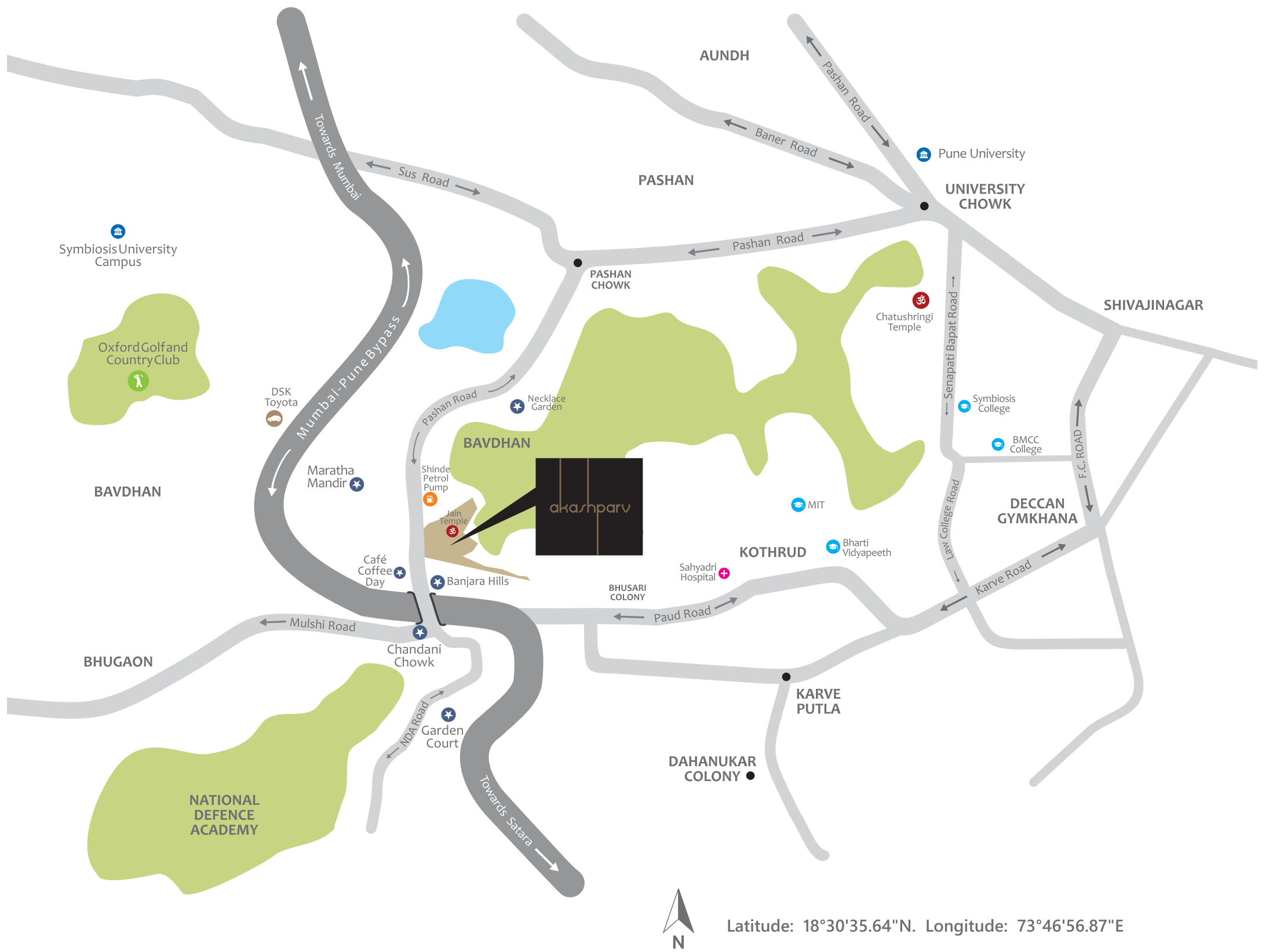
- Complete concealed fire resistant copper wiring
- T.V., Telephone and Internet point in all rooms
- Ample electrical points to fulfill all utilities



Servant Rooms

Servant rooms in 4 BHK flats

LOCATION & Connectivity



Site Address : S.No. 15, Chadani Chowk-Pashan Road, Kothrud Annex, Bavdhan , Pune. 411021

Key Distances



10 min. Education
Symbiosis
MIT
Savitribai Phule Pune University



10 min. Healthcare
Sahyadri Hospital
Dinanath Hospital
Krishna Hospital



5 min. Restaurants
Oasis
Trikaya
Ambrosia



20 min. Entertainment
Spot 18
E-Square
City Pride



20 min. Shopping
Westend Mall
Ozone
Pune Central



25 min. Connectivity
Pune Station
Expressway
Shivajinagar



25 min. Work Place
ICC Tower
IT Park, Hinjewadi



40 min. Pune Airport

SOME OF OUR
Creations

*Megh
sparsh*



Meghsparsah, S. No. 101/10, Mumbai-Banglore Highway, Ambegaon (Kh.), Pune.

Spandan
Feel the pulse of contemporary living...



Spandan, S. No. 117/1 Popular Nagar, Mumbai Pune Bypass, Warje, Pune

TIME
SQUARE



Times Square, C.T.S. No. 30, Bund Garden Road, Pune

PAR/TOSH
a life of joy



Paritosh, S.No. 31/32, Behind Mitcon, Balewadi, Pune

HIGH ON *Creativity*

An able team for an UPHILL task

Located in a unique topographical trifecta of hilly terrain, forest cover and plateaued landmass, Akashparv's naturally gifted topographical position presented a plethora of adaptation possibilities. A team of incisive creators – architecture prodigies and industry veterans in their own right – took up the challenge. The result was stupendous; Akashparv is a thorough testimony of ingenuity and innovation.

Arch. Prakash Kulkarni (Project Architect)

We embraced and tackled this challenge comprehensively, by overturning hurdles into opportunities. Raised elevation resting on top of dedicated parking stilts to afford uninterrupted views at every level, fluid column and pillar styling to facilitate maximum ventilation, a contemporary structural approach to allow enhanced spatial utilization and aesthetic value, three-way open apartments with unrestricted views – the subliminal elements of the high life quotient have been imbued in this creation with deliberate precision – to curate a lifestyle that's unique in every sense.

Arch. Mahesh Nampurkar (Project Landscape Architect)

Akashparv - The thought process encircling it: To get inspired and to work on the demanding process of 'Design' is one tough challenge. Akashparv is the uplifting project that stirred me to craft an exclusive design, firmly emphasizing on the 'S' trilogy- STYLE-STATUS-STORY. The functional spaces of the design enhance your rather mundane living to one with a distinctive appearance by adding a 'Style' to it. The ambience initiated by the design will elevate the 'Status' of cogitation towards the spaces invented. The design has been shaped in such a way that the end user is coaxed to pen down or verbalize a 'Story' of all the moments spent. Thus, Akashparv is a spot-on combination of a story expressed and fortified by Status and a wholesome experience of a distinguished lifestyle.

Credits

Project Architect

Ankur Associates
Arch. Prakash Kulkarni

Landscape Architect

Sumanshilp
Arch. Mahesh Nampurkar

Interior Architect

Arch. Ashwin Lovekar
Lovekar Design Studio

RCC Consultant

JW Consultant Pvt. Ltd.

Legal Advisor

Adv. Kiran Kothadia

We bank with



Disclaimer: The plans, specifications, images, brands & other details herein are only indicative & the Developer / Owner / Architect reserves the right to change any or all of these in the interest of the development. This printed material does not constitute an offer and / or a contract of any type between the Developer / Owner and the recipient. Any purchase / lease of this development shall be governed by the terms and conditions of the Agreement for Sale / Lease entered into between the parties, and no details mentioned in this printed material shall in any way govern such transactions. Tolerance +/-2% is possible in the unit areas on account of design and construction variances.

akashparv

Floor Plans

akashparv

RISE ABOVE THE *Rest*

Shubh Communication



Sharada Alliance[®]
PROMOTERS & BUILDERS
Creating Landmarks. Delivering Promises.



Shrikalp
Promoters & Builders

Site Office : S.No. 15, Chandani Chowk - Pashan Road, Kothrud Annexe, Bavdhan, Pune. 411021

Call : +91 8888 12 9000 / 8888 16 9000 / 9822 86 9990

Website : www.akashparv.com

Email : sales@akashparv.com

CREDAI
PUNE METRO

